

# **SPEL Houston LTUF Meeting October 14, 2010**

**Mimi Chang – Shaw E& C  
Interim Houston LTUF Chair**

# Welcome

**Mark Morris, Shaw Global Chief/Exec Director**

# Agenda

- Welcome
- Election for SPEL – LTUF officers
- Discussion
- Intergraph 2010 and GTUF Conference Updates
- Import Manager Demo
- User Stories

# Election for SPEL LTUF Officers

Chair Candidate:

- Chris Brallier, Foster Wheeler

Vice-Chair Candidate:

- Aarash Badiozzaman, Pasadena Refining System

Secretary Candidate:

- Mimi Chang, Shaw Group

Committee Members Candidates:

- Robert White, Fluor
- John Banda, Shaw Group

# LTUF Meeting Discussion


## Meeting Time & Length

- Weekday AM – 3 to 4 Hrs as needed
- Friday AM - 3 to 4 Hrs as needed
- Weekday late PM (4:00PM-7:00PM)

## Email Sharing

- Share or Not to Share?

## Discussion/Topics for Next Meeting

- Online  ETAP Interface
- Best Practices for Working in the Integrated Environment

## Host Company for Next Meeting

# Intergraph 2010 & GTUF Conference Updates

**Mimi Chang – Shaw E & C**

# Intergraph 2010 & GTUF Conference Updates

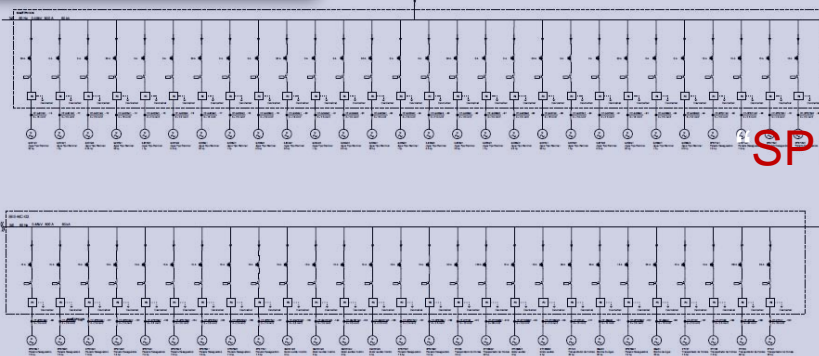
## *What is New?*

- Intergraph Announced Agreement to be Acquired by Hexagon
- SPEL B versus SPEL D
  - SPEL Basic – Original SPEL
  - SPEL Detailed – Sigragh.CAE

# The 1+1=3 SmartPlant Electrical Solution kit



## Basic Engineering

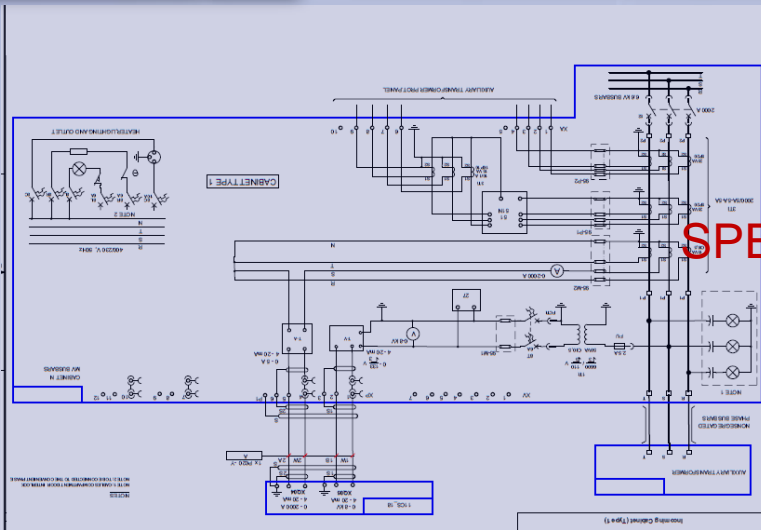


SPEL Basic

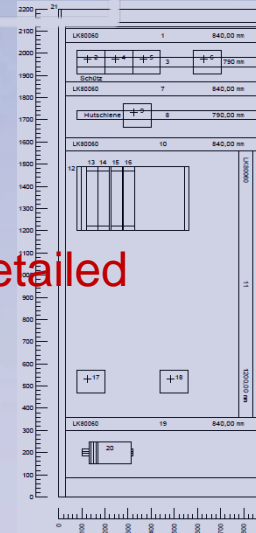
AB	B	C
		Bus BUS-4
10		
11		
12	Direct Leads:	
13	Unit-M- 14	Motor
14	Unit-M- 15	Motor
15	Unit-M- 16	Motor
16		
17	Circuits:	
18	CKT-20	Feeder
19		
20		
21		
22		
23		
24		
25		
26		
27		
28		



## Detailed Design



SPEL Detailed



Pos.	Betriebsmittelkennzeichen	BM-Art	Bauteilname
1	+622FA09-Schrank1	Zubehor	LK8000
2	+31K10 D01+622FA09-K200	Schalgerat	SRT 1030-EB44
3	+622FA09-Schrank1	Zubehor	
4	+31K10 D03+622FA09-K201	Schalgerat	
5	+31K10 D10+622FA09-K202	Schalgerat	
6	+622FA09-Schrank1	Zubehor	LK8000
7	+622FA09-Schrank1	Zubehor	Hutschiene
8	+622FA09-Schrank1	Schalgerat	
9	+622FA09-Schrank1	Zubehor	LK8000
10	+622FA09-Schrank1	Zubehor	
11	+622FA09-Schrank1	Zubehor	
12		Baugruppentypen	
13		AL-Baugruppe	
14		AL-Baugruppe	
15		SPS-Baugruppe	
16		SPS-Baugruppe	
17	+31PS10 M1+622FA09-K1	Schalgerat	
18	+31PS10 M1+622FA09-K2	Schalgerat	
19	+622FA09-Schrank1	Zubehor	LK8000
20	+31K10 D01+622FA09-K200	Klemmenleiste	
21	+622FA09-Schrank1	Bauschicht	

Provided by Intergraph Corporation. All Rights Reserved.

The Shaw Group Inc.



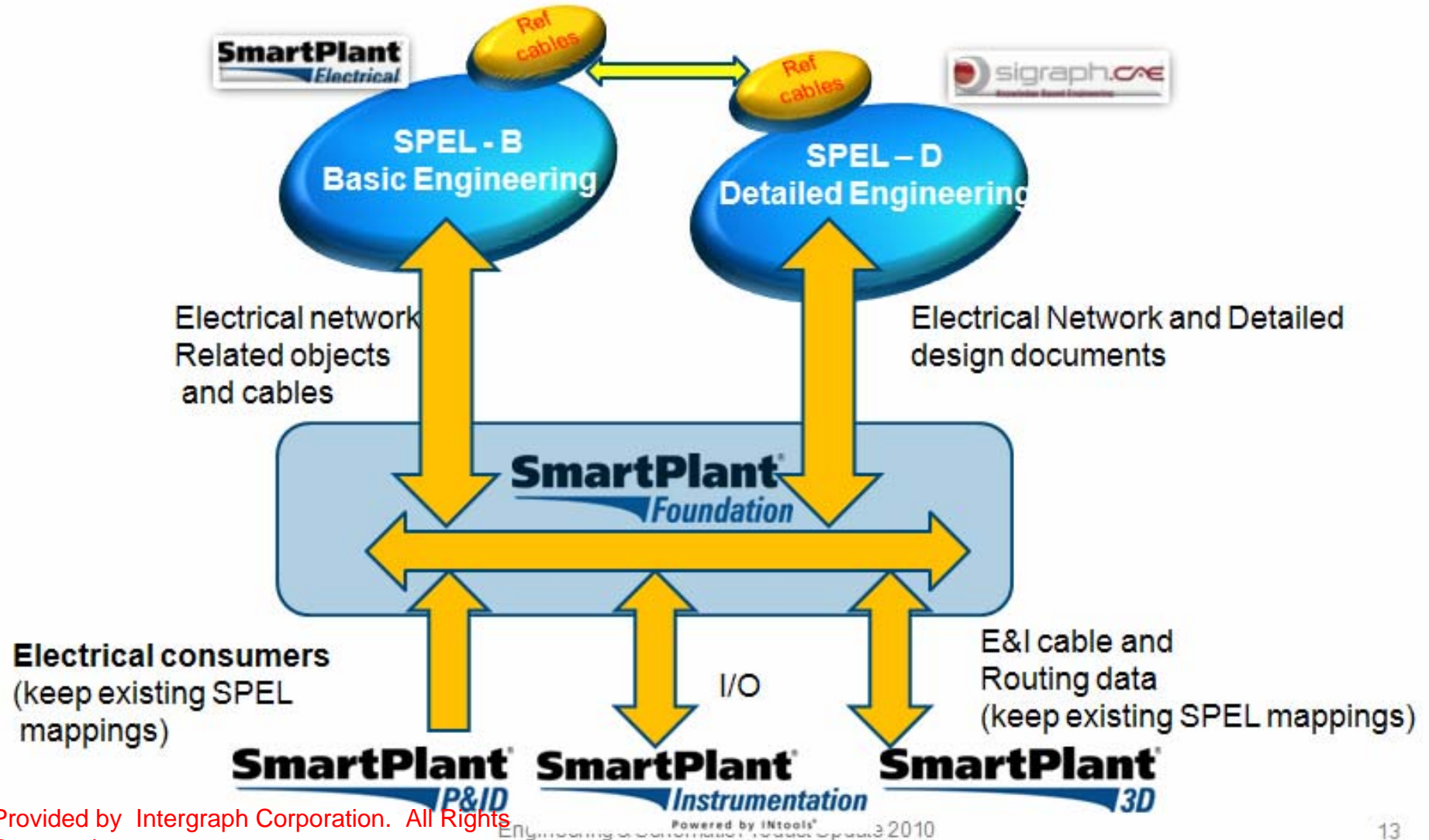


Electrical (& Instrumentation) Integration

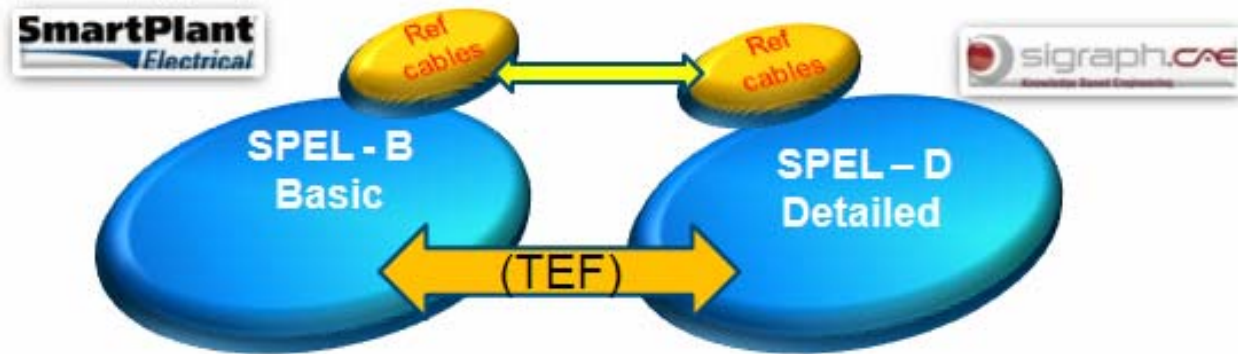
E (&I) cable interface



# Path forward – step B The interim integrated SmartPlant Electrical Solution

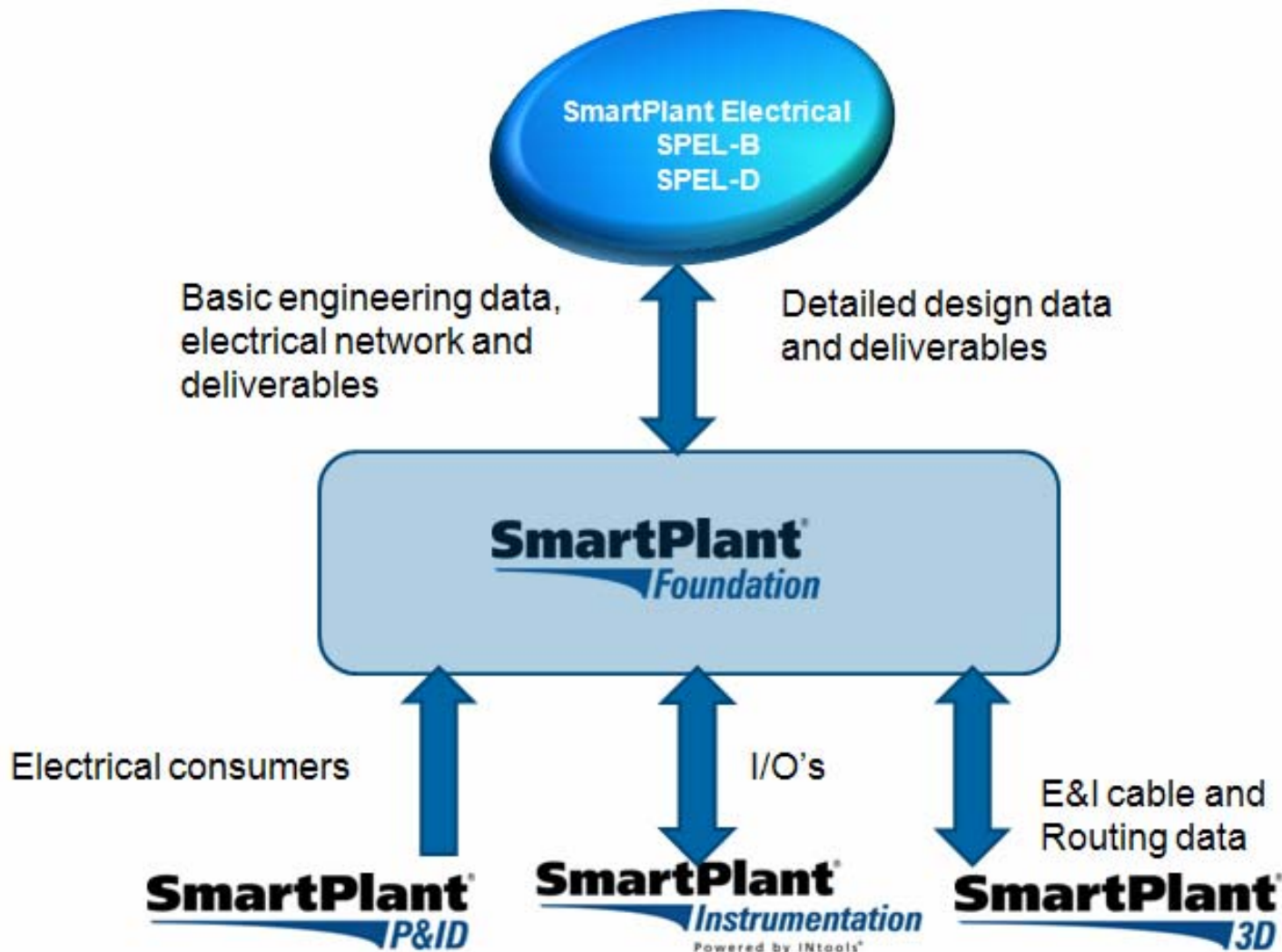


## Path forward step B – TEF based P2P



Electrical consumers, cables and network related objects

# The Best of Breed “E” Solution (SmartPlant Electrical B+D)



# Intergraph 2010 & GTUF Conference Updates

## *SPEL Updates:*

2009 SP3 to be released by early December

- Cable block diagrams:
  - ✓ full graphical environment
  - ✓ Drag and Drop from Reference Data Explorer
- Connecting Equipment in Parallel
- Auxiliary contacts feeding space Heaters
- Single line diagram enhancements
- Supporting the “as installed” cables’ data and “Delivered” drums
- Supporting W7 64 bit

# Intergraph 2010 & GTUF Conference Updates

## *SPEL Updates:*

2009 SP4 to be released Between 1Q2011 and 2Q2011

- Typical cable block diagrams
- First steps of Integration between SPEL B and SPEL Detailed

Next major release is ~ 2<sup>nd</sup> half of 2012

- More automation
- Design cases
- Cable management system enhancements
- Single item revision management
- UPS with multiple inputs
- Locking of items

# Intergraph 2010 & GTUF Conference Updates

## Integration & Cross Discipline Capabilities:

- Investing in integrating project disciplines
  - SPPID to SPEL
  - SPEL to SPI
  - SPEL to SP3D
- Investing in integration with partners such as ETAP
- Extended Intergraph's licensing offering by supporting PES (Plant Engineering Schematics) program

# Intergraph 2010 & GTUF Conference Updates

## Message from Intergraph

- Intergraph is looking for your inputs for:
  - MOV
  - Change Tracking
- Email: Stein, Meir Stein: [Meir.Stein@intergraph.com](mailto:Meir.Stein@intergraph.com)

# Intergraph 2010 & GTUF Conference Updates

*Mimi's Conference Experience:* ★★★★★

- Great Network & Technical Experience Exchange
- Informative and Useful Training Program
- Excellent Presentation & Wonderful Facility

# Import Manager Demo

**Mr. Yuval Adler – Intergraph**

# User Story

**Mr. Aarash Badiozzaman – Pasadena Refining  
System Inc**

# User Story

**Mr. Robert White, Fluor**

**Thank You for Joining Us**